

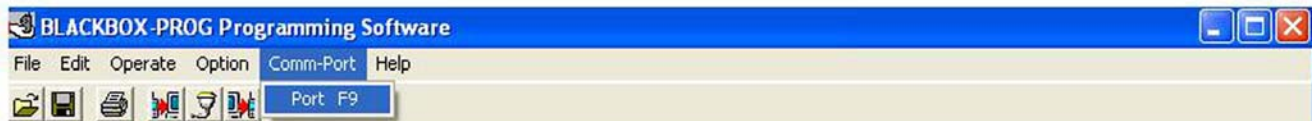


Guide to USB Programming Cable Usage

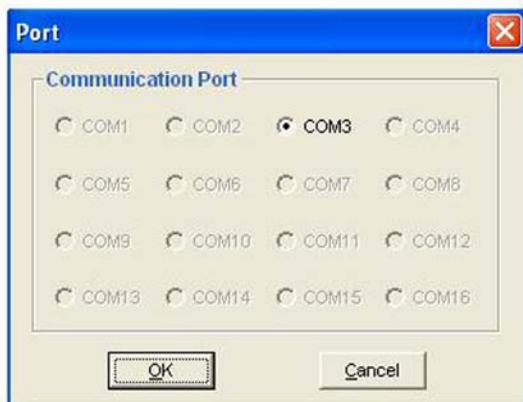
Choosing a Communications Port

When programming a radio, the radio must be connected to the COM Port of the computer via the programming cable.

1. From the **Setup** menu choose **Communication Port**.



2. From the **Communication Port** dialog box, select the communications port.



Read data from radio

1. Connect the radio via the programming cable to the COM Port.
2. Power-up the radio.
3. From the **Program** menu choose **Read from Radio**, or select from the tool bar.
4. From the **Read data from the radio** dialog box, click **OK** button.

Write data to radio

1. Connect the radio via the programming cable to the Com Port.
2. Power-up the radio.
3. From **Program** menu choose **Write to Radio**, or select from the tool bar.